



Procurement Management Department
 2115 Second Street, 1st Floor
 Fort Myers, FL 33901
 Main Line: (239) 533-8881
 Fax Line: (239) 485-8383
www.leegov.com/procurement

Posted Date: April 29, 2024

Solicitation No.: B240287JJB

Solicitation Name: Lakes Park Water Quality Phase III - Construction

Subject: Addendum Number 1

The following represents clarification, additions, deletions, and/or modifications to the above-referenced bid. This addendum shall hereafter be regarded as part of the solicitation. Items not referenced herein remain unchanged, including the response date. Words, phrases, or sentences with a strikethrough represent deletions to the original solicitation. Underlined words and bolded, phrases or sentences represent additions to the original solicitation.

1. **ATTACHMENT**
 - a. **Stop Logs Questionnaire**
2. **QUESTIONS/ANSWERS**

1.	Please confirm the information on the stop logs from Addendum 2 on the original bid are still accurate.
Answer	Yes, it is still applicable. It is being provided again in this Addendum for clarity.
2.	On B240287JJB Lakes Park Water Quality Phase III – Construction, Specification Section 43 06 00 Heavy Duty Stop Logs and the drawings do not show the dimensions of the stop log assembly. Please confirm we can use the Stop Log Questionnaire from Addendum 2 on the previous bid.
Answer	Please see answer to #1.
3.	Are there any changes from the previous bid?
Answer	Changes from the previous bid plans include lake bottom anchor design, PLC model, and communications design for the remote MOVs.
4.	Will Technical Solutions Inc. (TSI) be involved in this project?
Answer	Not at this time.

BIDDER/PROPOSER IS ADVISED, YOU ARE REQUIRED TO ACKNOWLEDGE RECEIPT OF THIS ADDENDUM WHEN SUBMITTING A BID/PROPOSAL. FAILURE TO COMPLY WITH THIS REQUIREMENT MAY RESULT IN THE BIDDER/PROPOSER BEING CONSIDERED NON-RESPONSIVE.

ALL OTHER TERMS AND CONDITIONS OF THE SOLICITATION DOCUMENTS ARE AND SHALL REMAIN THE SAME.

Jake Bond

Jake Bond
 Procurement Analyst Direct Line: 239-533-8898
 Lee County Procurement Management

STOP LOGS QUESTIONNAIRE

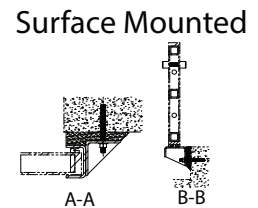
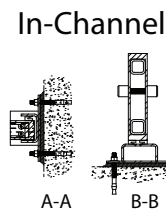
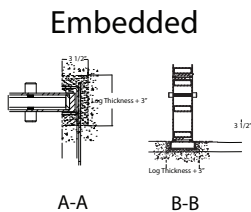
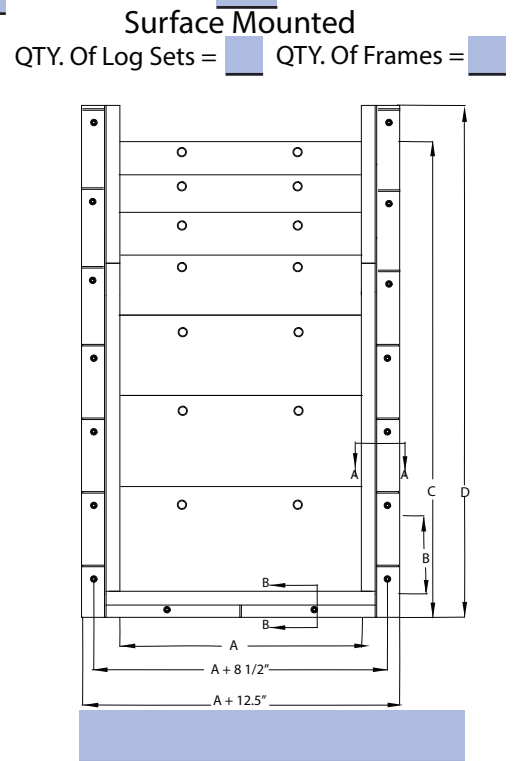
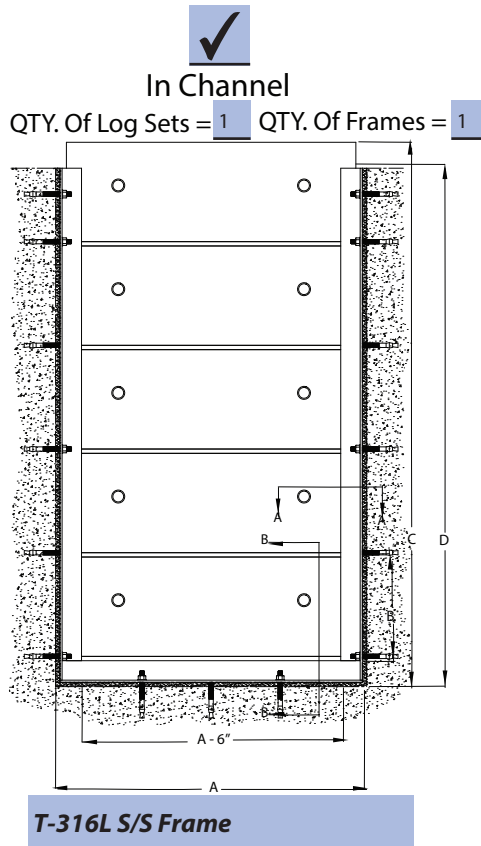
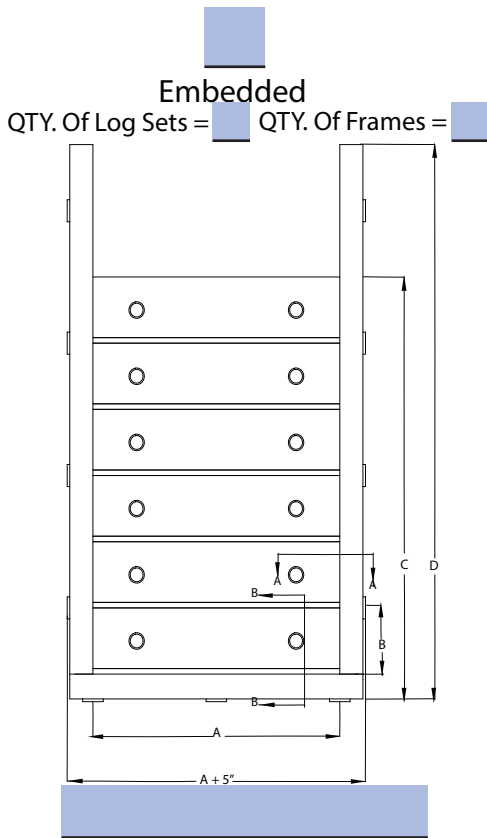
Project Name: Lakes Park WQ Ph 3

Location: Lakes Park, Lee County FL

Sales Rep:

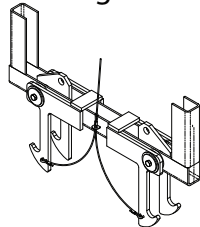
Tag #:

Contact Info:

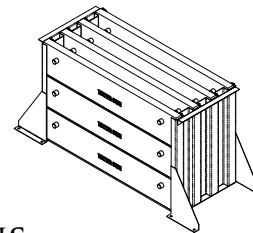


ACCESSORIES

Lifting Beam



Storage Racks



GENERAL QUESTIONS

A = Log Or Channel Opening Width: 1.5 FT Unseating Head Pressure: 5 FT

B = Log Height: 6 IN Log Quantity: 10 Seating Head Pressure: 5 FT

2B = Log Height: IN Log Quantity: Chemicals In Flow: Water with liquid alum

3B = Log Height: IN Log Quantity: D = Invert Of Opening To Operating Floor: 5 FT

C = Log Quantity 10 x B = 5 FT

Notes:

Submit